



## Contents

---

Utilibond Core Bonding Compound	2
Utilibond / Additives	3
Coring Package / Parts Breakdown	4
Coring Drums	5
Coring Package	6
Tools & Accessories	7
Tools & Accessories (cont.)	8
Pillow Block / Exploded View	9
Pillow Block	10
Water System Parts	11
Water System Parts (cont.)	12
Pendant & Pendant Parts	13
Filters / Hydraulic	14
Hydraulic Parts	15
Coring Equipment Parts	16
Coring Equipment Parts (cont.)	17
Core Heater for Cold Weather Reinstatements	18
Core Hole Covers / Road Plates	19
Parts List with Part Numbers	20
Parts List with Part Numbers - Continued	21
Parts List with Part Numbers - Continued	22
Parts List with Part Numbers - Continued	23

**NOTICE: All Rights Reserved.**

The entire content of this catalogue is subject to copyright. Any reproduction, transfer, alteration or utilization of this material for a public and/or commercial purpose without prior written consent of Utilicor Technologies is prohibited.

Features, availability and specifications were correct at the time of printing but, due to availability of materials and continued product improvement, features, availability and specifications may vary by product and are subject to change without notice.

## Utilibond Core Bonding Compound

---



### Utilibond Core Bonding Compound / Aged Asphalt

- Single 44lbs. bag of Utilibond powder
- Designed for reinstating larger diameter / thicker cores
- Aged asphalt colour / use on asphalt topped surfaces
- 2 year shelf life
- 48 Pails per pallet
- 30 minute final set time @ 70° F

**Part # UB-AA**



### Utilibond Core Bonding Compound / Natural Concrete

- Single 44lbs. bag of Utilibond powder
- Designed for reinstating larger diameter / thicker cores
- Natural concrete colour / use on concrete topped surfaces
- 2 year shelf life
- 48 Pails per pallet
- 30 minute final set time @ 70° F

**Part # UB-NC**



### Twin Pack / Utilibond Core Bonding Compound / Aged Asphalt

- Two 22lbs. bags of Utilibond powder
- Designed for reinstating smaller diameter / thinner cores
- Aged asphalt colour / use on asphalt topped surfaces
- 2 year shelf life
- 48 Pails per pallet
- 30 minute final set time @ 70° F

**Part # UB-TPA**



### Twin Pack / Utilibond Core Bonding Compound / Natural Concrete

- Two 22lbs. bags of Utilibond powder
- Designed for reinstating smaller diameter / thinner cores
- Natural concrete colour / use on concrete topped surfaces
- 2 year shelf life
- 48 Pails per pallet
- 30 minute final set time @ 70° F

**Part # UB-TPC**



### Utilicure Latex Spray

- 17 oz. spray bottle
- Designed for valve box installations and extreme hot weather
- Inhibits hydration of Utilibond
- Reduces cosmetic surface cracking
- Sold in boxes of 12

**Part # UB-UC**



### Utiliblack—Carbon Black Additive

- Carbon black additive for Utilibond Core Bonding Compound
- Use when existing road surface is newer asphalt
- Add one bottle per pail of Utilibond
- 2 oz. bottle
- Sold 12 per case

**Part # UB-CB**



### Utilibond XL

- Additive for Utilibond Core Bonding Compound
- Use during cold weather core reinstatements
- Decreases Utilibond set times in cold weather
- Add one bottle 46° - 55° / add two bottles 36° - 45°
- Can be used in conjunction with core heater apparatus
- 2 oz. bottle
- Sold 12 per case

**Part # UB-XL**



### Pea Gravel

- Clean washed pea stone
- Use during core dry-fitting process
- Add to Utilibond mix for valve box reinstatements. Use 50% pea stone ration to 50% Utilibond for valve box reinstatement process
- 25 kg. / 50 lbs. per bag
- 50 bags per skid

**Part # UB-PEA**

## Coring Package - Overview

---



**A-Flange Drive Adaptor bolts down to top of coring drum**



**Coring Drum with Procore diamond segments. Standard sizes are 12", 18" or 24" in diameter, and 22" in overall length**



**The Core Puller tools expansion plug fits the center pilot hole which is cut at the same time as the core is cut**



**Central Pilot Shaft allows for connection of a center cutter, which cuts the center pilot hole during the coring process**



**Three different styles of center cutter bits are available depending on pavement composition**



## Coring Drums

---



### 12" Diameter ProCor Professional Grade Coring Drum

- Manufactured to exceed industry standards
- Custom manufactured diamond segments allow for increased cutting life through both asphalt and concrete
- Stock length: 22"
- A-Flange style mount
- Four push holes for removal of stuck cores

**Part # CD-12**

---



### 18" Diameter ProCor Professional Grade Coring Drum

- Manufactured to exceed industry standards
- Custom manufactured diamond segments allow for increased cutting life through both asphalt and concrete
- Stock length: 22"
- A-Flange style mount
- Four push holes for removal of stuck cores

**Part # CD-18**

---



### 24" Diameter ProCor Professional Grade Coring Drum

- Manufactured to exceed industry standards
- Custom manufactured diamond segments allow for increased cutting life through both asphalt and concrete
- Stock length: 22"
- A-Flange style mount
- Four push holes for removal of stuck cores

**Part # CD-24**

---



### Professional Grade Coring Drums - Custom Sizes

- Manufactured to exceed industry standards
  - Length: Specify
  - Diameter: Specify
  - A-Flange style mount or 1 1/4" x TPI standard knuckle / specify
  - Push holes: specify
  - Segment composition: Concrete, Asphalt,
-

## Coring Package Parts

---



### A-Flange Drive Adapter

- Accommodates Utilicor's ProCor coring drums
- 1 1/4" x 7 T.P. I. threads
- Zinc coated

**Part # CP-AFLNG**



### Center Pilot Shaft

- Allows for use of center pilot bit
- Sizes available: 15.5", 16.5", 17.5" or 18.5"
- Shaft size for stock 22" drum length: 18.5" with 1/2" spacer (19" overall length)
- Use shorter lengths on core drums which have been cut down after re tipping
- Zinc coated

**Part # CP-SHAFT**



### PDC Center Bit

- Simultaneously cuts center hole when cutting core
- 2 3/8" polycrystalline diamond
- AW-ROD threads
- Superior penetration rates
- Recommended for tough concrete applications

**Part # CP-PDC**



### Roller Cone Center Bit

- Simultaneously cuts center hole when cutting core
- 2 3/8" carbide or 2 1/2" steel toothed
- AW-ROD threads

**Part # CP-BC**



### Carbide Center Bit

- Simultaneously cuts center hole when cutting core
- 2 3/8" carbide toothed
- AW-ROD threads

**Part # CP-TT**

## Tools & Accessories

---



### Core Puller Tool

- Specifically designed for keyhole core extraction and core reinstatement process
- 2-1/4" rubber expansion plug
- Plated black
- Top mounted eyelet for insertion of lifting bar
- High tensile threaded rod for durability

### Part # AC-PULLER

---



### Replacement Rubber Stopper for Core Puller

- Specifically designed for Core Puller Tool
- 2-1/4" size rubber expansion plug for CP-TT or CP-PDC bit
- 2 3/8" size rubber expansion plug for CP-BC bit
- Specify size on order

### Part # AC-PLUG

---



### Pavement Protection Plate

- Protects top of core from impact if core is stuck inside coring drum
- Place on top of core during cutting process before cutting
- Push stuck core out by impacting the top of the plate, not the cores surface

### Part # AC-10IP (12"), AC-16IP (18"), AC-22IP (24")

---



### Utilibond Mixing Blade

- Four bar mixing blade for proper Utilibond mix
- Fits 1/2" drill chuck / Use 7 amp. drilling or greater

### Part # AC-MIX

---



### Core Drum Extraction Tool

- Allows for easy and safe extraction of core drums that have become stuck in the pavement during the coring process
- Bolts onto A-Flange style coring drums
- Removable handle for easy storage

### Part # AC-CET

---



## Tools & Accessories

---



### Reinstatement Tool Set

- Complete tools set required to complete core reinstatements
- Includes: 5' long bar, two flat trowels, one small pointed trowel, sponge, white wash brush, pail opener and Utilibond mixing blade

**Part # AC-SET**

---



### Small Pry Bar

- Ideal for checking core cut for completion
- Insert into kerf line to dislodge core after coring process

**Part # AC-SBAR**

---



### 5' Long Bar

- 5' long heavy duty spud bar
- Ideal for using with core puller tool for lifting heavier cores
- Flat side of bar can be used for tamping cores down during reinstatement process

**Part # AC-LBAR**

---



### Dewalt D-Handle Corded Drill

- Heavy-duty 7.0 Amp Drill
- High torque motor suitable for mixing Utilibond Core Bonding Compound
- Accommodates Utilibond mixing blade
- 2-position rear handle for added support during mixing process
- 1/2" chuck

**Part # AC-DRILL**

---

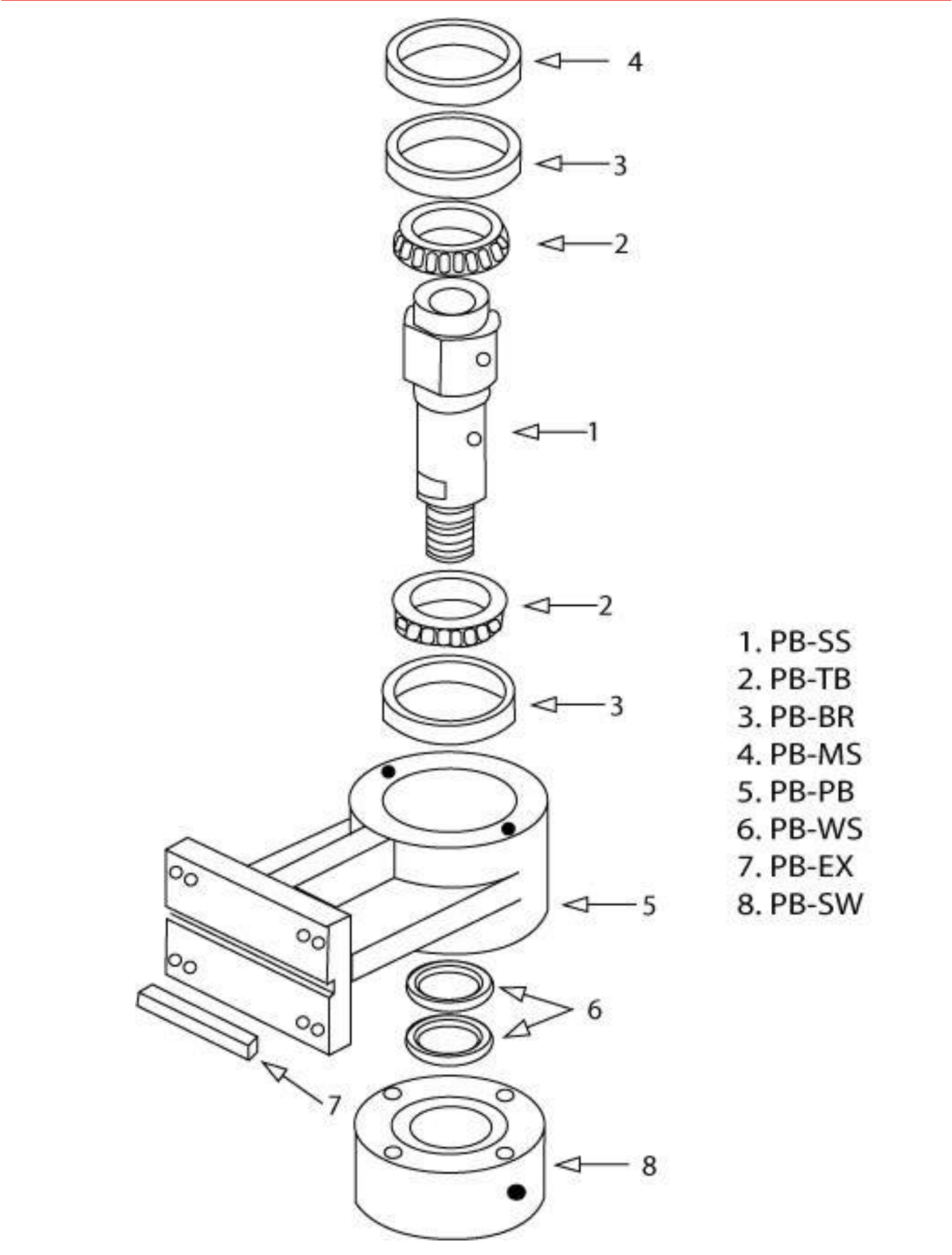


### Pail Opener for Utilibond Pails

- Specifically designed for opening 5-gallon pails
- Effective during colder weather work
- Eliminate worker strain removing pail lids
- Durable plastic

**Part # AC-OPEN**

---



## Pillow Block / Water Swivel

---



### Complete Pillow Block / Water Swivel Assembly

- Allows water to be channeled to center pilot cutter and coring drum
- Hydraulic motor direct mounts to top
- 1 1/4 x 7 T.P.I spindle shaft
- Specify preload shim size (.350 or .420)

**Part # PB-COMP**

---



### Complete Pillow Block Rebuild Kit

- Includes spindle shaft, 2 OEM bearings, 2 OEM races and 2 leather water seals
- Does not include preload shim

**Part # PB-REBUILD**

---



### Pillow Block Spindle Shaft

- Replacement shaft for Pillow block / water swivel
- 1 1/4 x 7 T.P.I spindle shaft

**Part # PB-SS**

---



### Pillow Block Tapered Bearings

- Replacement bearings
- Sold as each / two required
- Tapered

**Part # PB-TB**

---



### Pillow Block Bearing Race

- Replacement tapered bearing race
- Sold as each / two required

**Part # PB-BR**

---



### Pillow Block Water Seals

- Replacement water seals
- Sold as each / two required
- Leather

**Part # PB-WS**

---



### Pillow Block Pre-load Shim

- Required for pre-load of pillow block bearings
- .350 or .420 sizing
- White hydraulic motors order .420 / Dan Foss hydraulic motors order .350

**Part # PB-MS**

---

## Water System - Parts

---



### 12 Volt Water Pump

- Self priming
- Run dry capable
- Available in 1.8 G.P.M. or 3.2 G.P.M.

**Part # TR-FLOW**

---



### Water Filter / Banjo Style

- 50 Micron filter (washable)
- 1/2" NPT threads

**Part # TR-FILTER**

---



### Water Tank Lid

- For 100 gallon tank
- Plastic with lanyard and vent

**Part # TR-LID**

---



### Glycol Tank Lid

- For winterizing glycol tank
- Plastic with vent

**Part # TR-LIDW**

---



### Water Hose

- Clear / PVC
- 1/2" Outside diameter
- Sold per foot

**Part # TR-HOSE**

---



### Valve - 100 Gallon Water Tank

- Plastic
- 1/4 turn ball valve
- 1/2" NPT threading for feed line, 3/4" NPT threading for quick drain port (specify)

**Part # TR-BV100**

---



### Valve - Glycol Tank

- 1/4 turn ball valve

**Part # TR-BVGLY**

---

## Water System - Parts

---



### Water Nozzle

- Replacement nozzle for auxiliary water hose

**Part # TR-LPGUN**

---



### High Pressure Wash Gun

- Use with High Pressure Wash System
- Includes 1502 nozzle

**Part # TR-HPGUN**

---



### High Pressure Wash Hose / 3/8"

- Includes quick connect fitting for pump side
- Rated to 3000 P.S.I.

**Part # TR-HPHOSE**

---



### High Pressure Wash Pump

- Includes unloader assembly
- Up to 3000 P.S.I. capacity
- Does not include hydraulic motor

**Part # TR-PUMP**

---



### High Pressure Wash Pump Motor

- OMM 50 hydraulic motor
- O.E.M.
- Side ported

**Part # TR-HYDMTRW**

---



### 1/4 Turn Ball Valve

- High Pressure capacity
- 3/8" NPT Threading
- Use on pillow block or High Pressure wash system

**Part # TR-BVHP**

---



## Pendant - Parts

---



### Pendant - Complete

- Includes 15 feet of connector wire
- Connector to truck side hood and pin assembly included
- Specify truck model
- For Series 500, MD-300, and MPX-SS coring units (Specify)

**Part # TR-PEND**

---



### Pendant Hood and Truck-Side Mounting Bracket

- Rectangular connector housing for control pendant
- Specify Pendant side or Truck side

**Part # TR-PENDF (Pendant side)**

**Part # TR-PENDM (Truck side)**

---



### Pendant Connectors

- Pendant side (female)
- Specify 10 or 16 pin configuration

**Part # TR-PINF**

---



### Pendant Connectors

- Truck side (male)
- Specify 10 or 16 pin configuration

**Part # TR-PINM**

---



### Pendant Wire

- 16/10 gauge
- Sold per foot

**Part # TR-WIRE**

---



### Pendant Switch

- Military grade
- Available in on/off or toggle (Specify)

**Part # TR-SWITCH (on/off)**

**Part # TR-SWICHT (toggle / returns to center)**

---



### Pendant for Core Hoist

- For Utilicor core hoist
- Manufactured by Warn Winch

**Part # TR-PENDHST**

---

## Filters

---



### Kohler Oil Filter

- Use on MPX-SS and ROVER Coring Unit
- Change every 100 hours of operation

**Part # TR-FILTEROIL**

---



### Kohler Air Filter

- Use on MPX-SS and ROVER Coring Unit
- Change every 100 hours of operation

**Part # TR-FILTERAIR**

---



### Kohler Inline Fuel Filter

- Use on MPX-SS and ROVER Coring Unit
- Change every 100 hours of operation

**Part # TR-FILTERFUEL**

---



### Donaldson Hydraulic Filter - I65875

- Use on MPX-SS and Rover Coring units
- Change every 100 hours of operation
- Suction side filter

**Part # TR-DONI65875 (MPX & Rover)**

---



### Gardner Denver Hydrapak Hydraulic Filter

- Use on Series 500 and MD-300 Coring Units
- Change every 100 hours of operation

**Part # TR-HYDFLTR**

---



### Donaldson Hydraulic Filter - P560694

- Use on Rover Coring unit
- Filter for hydrostatic drive system
- Change every 100 hours of operation
- Suction side filter

**Part # TR-DON560694**

---

## Hydraulic Parts

---



### Flush Mount Hydraulic Gauge

- 2000, or 3000 PSI Gauge
- Flush Mount

**Part # TR-2000F (2000 PSI)**

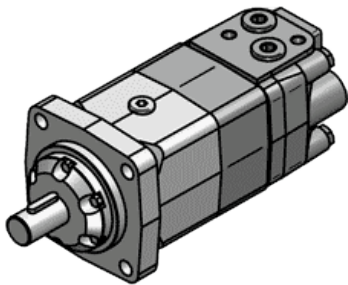
**Part # TR-3000F (3000 PSI)**



### Lenz Hydraulic Tank Site Glass

- Hydraulic oil level
- Temperature
- Fits Series 500, MD-300, MPX-SS and Rover Coring Units

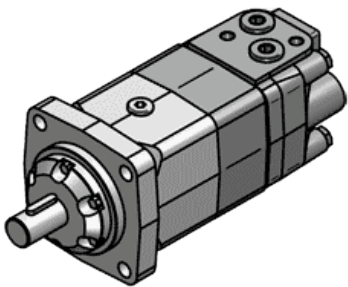
**Part # TR-SITE**



### 15 CU. IN. Hydraulic Motor without Speed Sensor

- For use on all Utilicor Coring Units
- Does not include speed sensor
- Top ported

**Part # TR-HYDMTR**



### 15 CU. IN. Hydraulic Motor with Speed Sensor

- For use on all Utilicor Coring Units
- Includes speed sensor
- Use on Utilicor coring units equipped with RPM readout
- Top ported

**Part # TR-HYDMTRS**



### Hydraulic Fittings & Hoses

- Full stocking of all fittings
- Hoses custom manufactured OEM specifications
- Specify on order

**Part # TR-HYDHOSE (Hoses)**

**Part # TR-HYDFIT (Fittings)**

## Coring Equipment - Parts

---



### Stabilizer Replacement Pads

- Use on Series 500 and MD-300 and MPX-SS Coring Units
- High Density rubber
- Sold as each

**Part # TR-PAD**

---



### Door Latch Set - Complete

- Use on Series 500, MD-300 and MPX-SS Coring Units
- Sold as set

**Part # TR-LATCH**

---



### Rubber Splash Guard

- Use on Series 500 and MD-300 and MPX-SS Coring Units
- Does not include aluminium retaining bar

**Part # TR-RUBBER**

---



### Core Hoist Motor

- Warn 2000 lbs. Capacity winch
- Includes remote pendant
- 12 Volt

**Part # TR-HSTMTR**

---



### Core Hoist Pendant

- Remote pendant
- 12 Volt

**Part # TR-PENDHST**

---

## Coring Equipment - Parts

---



### IGUS Energy Chain

- Used on MD-300, MPX-SS and Rover coring equipment
- Sold per foot
- Does not include mounting brackets
- Specify size / 2828 or 3838 series

**Part # TR-IGUSENERGY**

---



### IGUS Energy Chain Mounting Brackets

- Used on MD-300, MPX-SS and Rover coring equipment
- Sold as each
- Specify size / 2828 or 3838 series

**Part # TR-IGUSMOUNT**

---



### IGUS Drylin Linear Glide Carriage

- Replacement carriage for all Utilicor sliders
- Self adjusting
- No grease required

**Part # TR-IGUSCAR**

---



### IGUS Drylin Rail

- Replacement rail for all Utilicor slider assemblies and side shift unit
- Specify hole spacing

**Part # TR-IGUSRAIL**

---



### Switch Two Way

- Double Pole
- Cutter / High Pressure Wash switch
- 12 Volt

**Part # TR-MB2BD3**

---



### Switch One Way

- Single Pole
- Use on low pressure water
- 12 Volt

**Part # TR-MB2BD2**

---



## Core Heater

---



### Core Heater

- Heats both the core and the cored hole at the same time
- Allows for core reinstatements when temperatures drop below freezing
- Propane blower not included
- Smaller size accommodates cores up to 18" / larger size accommodates both 18" and 24" diameter cores

**Part # AC-HTR-18**

**Part # AC-HTR-24**

---



### 35000 BTU Corded Propane Blower

- For use with propane gas
- One touch gas valve with Piezo lighter
- High temperature limit switch
- Flame safety shut-off
- Requires 110 volt power source
- Propane tank not included

**Part # AC-BLR**

---



### 30000- 60000 BTU Cordless Propane Blower

- For use with propane gas
- Runs up to 4 hours on internally charged battery
- One touch gas valve with Piezo lighter
- High temperature limit switch
- Flame safety shut-off
- Built-in trickle charger
- Propane tank not included

**Part # AC-BLRRC**

---



### Infrared Heat Gun

- Accurately displays pavement temperatures
- Helps to gauge Utilibond set up times
- Use with Core Heater during cold weather reinstatement process

**Part # AC-INFRA**

---



### Utilibond XL

- Additive for Utilibond Core Bonding Compound
- Use during cold weather core reinstatements
- Decreases Utilibond set times in cold weather
- Add one bottle 46° - 55° / add two bottles 36° - 45°
- Can be used in conjunction with core heater apparatus
- 2 oz. bottle
- Sold 12 per case

**Part # UB-XL**

---

## Road Plates

---

### 12" Road Plate / Standard



- Allows for roadway to be opened temporarily
- Durable 1/4" thick checker plated top
- Precise collar that fits snugly into cored opening
- Will not tip or spin out of cored hole
- Painted safety yellow for visibility

**Part # AC-12RP**

---

### 18" Road Plate / Standard



- Allows for roadway to be opened temporarily
- Durable 1/4" thick checker plated top
- Precise collar that fits snugly into cored opening
- Will not tip or spin out of cored hole
- Painted safety yellow for visibility

**Part # AC-18RP**

---

### 24" Road Plate / Standard



- Allows for roadway to be opened temporarily
- Durable 1/4" thick checker plated top
- Precise collar that fits snugly into cored opening
- Will not tip or spin out of cored hole
- Painted safety yellow for visibility

**Part # AC-24RP**

---

### Road Plate / Securable / 12", 18" and 24"



- Allows for roadway to be opened for long durations
- Durable 1/4" thick checker plated top
- Urethane expansion ring secures plate into roadway
- Tamper resistant
- Five sided Penta 7/8" nut for additional safety
- Painted safety yellow for visibility
- Penta drive socket sold separately

**Part #'s AC-12RPS, AC-18RPS, AC-24RPS**

---

### 7/8" Penta Socket



- Fits securable road plate nut
- 1/2" drive socket

**Part # AC-PENTA**

---

## Part #

## Utilibond

### UTILIBOND Permanent Pavement Bonding Compound - Non Skid Lot

Utilibond Aged Asphalt, 44 lb. bag (per pail)	UB-AA
Utilibond Natural Concrete, 44 lb. bag (per pail)	UB-NC
Utilibond Aged Asphalt Twin Pack, 2 X 22 lb. bags (per pail)	UB-TPA
Utilibond Natural Concrete Twin Pack, 2 X 22 lb. bags (per pail)	UB-TPC

### UTILIBOND Permanent Pavement Bonding Compound - 48 Pail Skid Lot

Utilibond Aged Asphalt, 44 lb. bag (skid lot of 48 pails)	UB-AA48
Utilibond Natural Concrete, 44 lb. bag (skid lot of 48 pails)	UB-NC48
Utilibond Aged Asphalt Twin Pack, 2 X 22 lb. bags (skid lot of 48 pails)	UB-TPA48
Utilibond Natural Concrete Twin Pack, 2 X 22 lb. bags (skid lot of 48 pails)	UB-TPC48

### UTILIBOND Additive

Utilibond-XL / set time reduction in cold weather	UB-XL
Utiliblack Carbon Additive / for "new" asphalt roadways	UB-CB
Utilicure Acrylic Latex Emulsion Spray / valve box installation or extreme hot weather	UB-UC

## Coring Equipment

### Coring Equipment

MC-450 / Coring Attachment	MC450
Minicor-2 / Coring Attachment	MINICOR-2
MPX-SS / <i>Multi-Platform Coring Unit with "Side Shift" - Truck or Trailer Mount</i>	MPX-SS
Trailcor Rover / Towable & Self Propelled Coring Unit	ROVER
MD-300 / Multi-Directional Coring Unit - Truck Mounted	MD-300
Series 500 / Heavy Duty Coring Unit - Truck Mounted	SERIES 500

### Equipment Options

Deck mounted access steps	TR-DECK
Adaptor plate for MC-450 to accommodate skid steer mount	TR-MOUNT
Cold weather winterizing system	TR-CW
MPX truck mount bumper	TR-BUMP
"Stabilizer Deployed" warning system	TR-STAB
Class 5 pintle plate / truck mounted /18,000 lbs. capacity / includes pintle hook and wiring	TR-PINTLE
High Pressure Wash System (1500 P.S.I.)	TR-WASH
Core hoist - 12 volt DC powered, truck mounted 500 pound lift capacity	TR-HOIST
3000 Watt AC/DC Inverter with GFCI bumper mounted receptacle	TR-INVERT
Kohler Diesel engine upgrade for MPX - Model KD6252	TR-DIESEL
Trailer / accommodates MPX coring unit	TR-TRLR

### Storage Options

MPX tool boxes	TR-TOOL
36"L x 17"H x 18"D / deck mounted storage box / shelving included (aluminum)	TR-BOXS
84"L x 20"H x 20"D underdeck long handled tool & general storage tool box (aluminum)	TR-BOX
Slidemaster heavy duty slide-out storage tray with open storage box (72" x 24")	TR-SLIDE
84"L x 36"H x 18"D / deck mounted storage box / shelving included (aluminum)	TR-BOXL
84"L x 41"H x 24"D / deck mounted box with roll-up doors / shelving included (aluminum)	TR-ROLL

	Part #
<b>Core Drums &amp; Center Pilot</b>	
<b>Core Drums</b>	
8" diameter Utilicor ProCor coring drum with "A" flange / 22" drum depth	CD-8
12" diameter Utilicor ProCor coring drum with "A" flange cut out / 22" drum depth	CD-12
14" diameter Utilicor ProCor coring drum with "A" flange cut out / 22" drum depth	CD-14
16" diameter Utilicor ProCor coring drum with "A" flange cut out / 22" drum depth	CD-16
18" diameter Utilicor ProCor coring drum with "A" flange cut out / 22" drum depth	CD-18
20" diameter Utilicor ProCor coring drum with "A" flange cut out / 22" drum depth	CD-20
24" diameter Utilicor ProCor coring drum with "A" flange cut out / 22" drum depth	CD-24
<b>Center Pilot Assembly</b>	
Steel internal pilot shaft - 18.5" stock length (also available in lengths 15", 16" and 17")	CP-SHAFT
"A" Flange drive adaptor / accommodates center pilot shaft	CP-AFLNG
<b>Center Pilot Bits</b>	
Tri-tooth center pilot bit - 2 3/8" diameter (carbide)	CP-TT
PDC center pilot bit - 2 3/8" diameter (polycrystalline diamond)	CP-PDC
Roller cone internal pilot bit - 2 1/2" diameter (steel toothed)	CP-BC
<b>Coring Packages</b>	
12" diameter coring package with PDC center bit	CR-PKGPDC12
18" diameter coring package with PDC center bit	CR-PKGPDC18
24" diameter coring package with PDC center bit	CR-PKGPDC24
<i>Includes: core drum, drive adaptor, pilot shaft, PDC center bit, core puller, Utilibond mixing paddle, impact plate</i>	
<b>Core Drum Re-toothings</b>	
Re-toothings of 12" core drum	CD-RETIP12
Re-toothings of 18" core drum	CD-RETIP18
Re-toothings of 24" core drum	CD-RETIP24
<b>Tools &amp; Accessories</b>	
<b>Tools</b>	
Utilibond mixing blade / 4 bar style / for 1/2" chuck drill	AC-MIX
Steel impact plate for 12" or 18" diameter core drum	AC-IP
Infrared temperature gun	AC-INFRA
Keyhole reinstatement starter tool set (2 flat trowels, 1 pointed trowel, sponge, pail opener, pry bar, 5' lift bar, wash brush, mix blade)	AC-SET
DeWALT 1/2" Chuck, D-Handle Drill for mixing Utilibond™ / Corded / 9 amp	AC-DRILL
Core puller replacement 2 1/4" or 2 3/8" expansion rubber plug (specify)	AC-PLUG
Utilicor core puller with 2 1/4" or 2 3/8" expansion plug, black plated	AC-PULLER
Core Drum Extraction Tool	AC-CET
<b>Winter Reinstatement Equipment</b>	
35,000 BTU forced air heater 110 volt / for core heater / propane tank not included	AC-BLR
35,000 BTU forced air heater cordless / for core heater / propane tank not included	AC-BLRRC
Core heater - for winter reinstatements of 18" diameter holes (blower not included)	AC-HTR-18
Core heater - for winter reinstatements of 18" & 24" diameter holes (blower not included)	AC-HTR-24
<b>Road Plates - Core Hole Covers / Standard &amp; Securable Styles</b>	
Standard / for 12" diameter cored hole / checker plated, 1/4" thick, steel road plate	AC-12RP
Standard / for 18" diameter cored hole / checker plated, 1/4" thick, steel road plate	AC-18RP
Standard / for 24" diameter cored hole / checker plated, 1/4" thick, steel road plate	AC-24RP
Securable / for 12" diameter cored hole / checker plated, 1/4" steel, steel road plate	AC-12RPS
Securable / for 18" diameter cored hole / checker plated, 1/4" steel, steel road plate	AC-18RPS
Securable / for 24" diameter cored hole / checker plated, 1/4" steel, steel road plate	AC-24RPS
Socket tool for 7/8" penta bolt used on securable road plate / 1/2" drive	AC-PENTA

	Part #
<b>Parts</b>	
<b>Filters</b>	
Kohler engine inline fuel filter	TR-FILTERFUEL
Kohler engine oil filter	TR-FILTEROIL
Kohler engine air filter # 2508301-s	TR-FILTERAIR
Kohler engine prefilter # 2508304-s	TR-FILTERPRE
Donaldson hydraulic filter (MPX and ROVER)	TR-DONP165875
Donaldson hydraulic filter (ROVER)	TR-DONP560694
Hydrapac hydraulic filter	TR-HYDFLTR
<b>Truck Parts</b>	
Outrigger replacement pad / rectangular / set of 2	TR-PAD
Outrigger replacement pad / round / sold each	TR-PADRD
Splash guard door latch - set of 2	TR-LATCH
Splash guard door rubber skirt	TR-RUBBER
Switch - single position (Includes switch, single contact and fixing collar)	TR-MB2BD2
Switch - two position (Includes switch, two contacts and fixing collar)	TR-MB2BD3
Igus energy chain mounting brackets - set of two	TR-IGUSMOUNT
Igus energy chain / sold per foot / 2828 series or 3838 series / specify	TR-IGUSENERGY
Igus DryLin linear glide carriage / sold each	TR-IGUSCAR
Igus DryLin rail / sold each	TR-IGUSRAIL
Splash guard doors / one complete set / includes hinges, latch set and rubber skirt	TR-DOOR
<b>Hydraulic</b>	
Hydraulic gauge 0-3000 P.S.I. / NPT threading	TR-GAUGE
Hydraulic gauge 0-2000 P.S.I. flush mount style	TR-2000F
Hydraulic gauge 0-3000 P.S.I. flush mount style	TR-3000F
Hydraulic tank site glass - Lenz	TR-SITE
Hydraulic motor for high pressure wash pump	TR-HYDMTRW
Hydraulic motor for coring drum assembly	TR-HYDMTR
Hydraulic motor for coring drum assembly with R.P.M. sensor	TR-HYDRTRS
<b>Core Hoist</b>	
Core hoist remote pendant	TR-PENDHST
Core hoist motor / replacement / 12 volt	TR-HSTMTR
<b>Pendant</b>	
Pendant wire (16/10 or 16/16 - specify) per foot	TR-WIRE
Pendant switch - toggle - each	TR-SWITCHT
Pendant switch - on/off - each	TR-SWITCH
Pendant internal pin connector / female / 10 or 14 pin / specify (Pendant Side)	TR-PINF
Pendant internal pin connector / male / 10 or 14 pin / specify (Truck Side)	TR-PINM
Pendant receptacle / 10 or 14 pin / specify (Truck Side)	TR-PENDM
Pendant hood / 10 or 14 pin / specify (Pendant Side)	TR-PENDF
Coring Truck Pendant / Complete	TR-PEND
<b>Water System</b>	
Low pressure water gun	TR-LPGUN
Water filter / inline (Banjo style)	TR-FILTER
Lid for glycol or rover water tank (plastic)	TR-LIDW
Lid for 100 gallon water tank (plastic)	TR-LID



## Parts List

---

	Part #
1/4 turn ball valve for pillow block (metal)	TR-BVLP
1/4 turn ball valve for high pressure wash system (metal)	TR-BVHP
1/4 turn ball valve for glycol tank (plastic)	TR-BVGly
1/4 turn ball valve for 100 gallon water tank (plastic)	TR-BV100
High pressure wash gun / wand and nozzle	TR-HPGUN
High pressure wash hose	TR-HPHOSE
12-Volt demand water pump, self priming for MTC (3.0 G.P.M )	TR-FLOWSML
12-Volt demand water pump, self priming (3.0 G.P.M)	TR-FLOW
High pressure water pump (includes unloader / does not include hydraulic motor)	TR-PUMP

### Pillow Block

Shim. (.350 or .420 / specify)	PB-SHIM
Tapered bearing race / each (for standard size pillow block)	PB-BR
Tapered bearings / each (for standard size pillow block)	PB-TB
Water seals / each (for standard size pillow block)	PB-WS
Spindle shaft adaptor / 1 7/8" female thread to 1 1/4" male thread	PB-ADPTR
Spindle shaft (1 1/4" x 7 TPI threading / standard size)	PB-SS
Rebuilt Kit (1 1/4" x 7 TPI spindle shaft, water seals, bearing and races for water swivel / pillow block)	PB-REBUILD
Pillow block assembly complete (1 1/4" x 7 TPI threading)	PB-COMP